



Pella Church



"Building relationships to impact the Kingdom for His Glory"

continues to be God's calling for Pella. We are prayerfully searching for the person God has chosen to lead Pella into our next chapter of ministry. A pastor who shares our passion for impacting the Kingdom through a relational ministry. Do you share this passion?

If God is prompting you to explore Pella Church further, please continue to read this document for more information.

TABLE OF CONTENTS

2	Our History
2	Our Mission
3	Our Direction
4	Our Building Blocks
5	Key Leadership Challenges
6	Areas of Ministry
7-8	Ministry Organization
8	Strategic Structure
9-10	Job Description
11-14	Appendix



OUR HISTORY



Pella Reformed Church has a rich history beginning in 1884 when a group of Dutch families established the village of Pella, a “city of refuge”. The village included a post office, broom factory, blacksmith shop and general store. The earliest church services were held in the general store. In the spring of 1884, the first church building was erected and on August 11, 1884, Pella Reformed Church was organized.

God continued to grow Pella Church. Together we have celebrated God’s abundant blessings. Together we have trusted God in the challenges. Together we have sought to love God, love others and serve all. So, while the village of Pella eventually faded into the history books, Pella Church has remained. Pella continues to be a beacon of God’s love and continues to share the Gospel of Jesus Christ with those we encounter.

OUR MISSION



Building relationships
to impact the Kingdom
for His Glory.



OUR DIRECTION



In the beginning God created the world from nothing and placed human beings within it. Everything God created, God proclaimed “good”. While in the garden, human beings were in perfect relationship with God until “the fall” and their eventual exit. Since then, human beings have been wandering earth and walked away from covenantal relationships God had offered, through which God was trying to re-establish this perfect relationship.

Then God entered the world in the form of a human being; Jesus Christ - Emmanuel, which means “God with us”. Jesus is God’s once and for all, perfect covenant to bring all human beings back into a perfect relationship with God forever. We can learn from Jesus’ example how to be in relationship with God and other human beings. After the ascension of Jesus into heaven, the church - in the power of the Holy Spirit - was called to be a witness to this relationship God offers human beings through Jesus Christ.

As the church, relationships are how we participate with God’s on-going work in the world. Our relationships show people how God is always pursuing a relationship with us no matter where we are. But, a relationship with God in Jesus Christ, right now, is not the end. Through Jesus Christ we will enter the fullness of God’s kingdom, where we will stand face-to-face with our Heavenly Father. This is the fullness of our perfect relationship with God that God intends for all human beings, and to which Pella Church witnesses.



OUR BUILDING BLOCKS



Scripture

Reforming and informing our lives and actions. Studying God's Word is how we begin to see the world the way God does. We especially learn about the covenantal relationship with God through Jesus Christ.

People

People are created uniquely in the image of God. We strive for unity with each other together with God, which leads to a healthy church. We are people passionate about the hearts and lives of people.

Time

Time is a valuable resource in our world today, and relationships take time. If we willingly share our time with others we will enter into opportunities and experiences that cultivate deep, Christ-centered relationships.

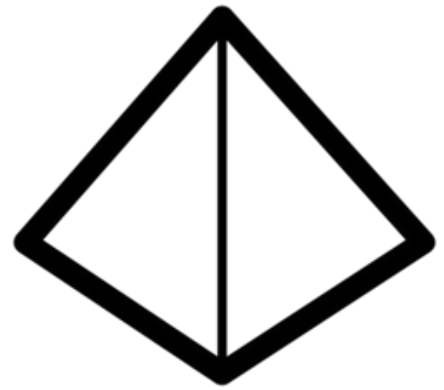
The Church Building

We have been blessed with our church building. The building is a place in our lives that is set aside for us to gather together in God's presence as a worshiping community and nurture on-going relationships. However, the building is not an ending point. We must take our relationships out into our world and invite others in.

2 Timothy 3:16-17, Matthew 18:20, Matthew 28:19-20,
Acts 2:42, Ephesians 3:11-21, Colossians 3:12-17,
Hebrews 9:13-14, Hebrews 10:19-25



KEY LEADERSHIP CHALLENGES



Two challenges facing our new pastor are the expansion of our children's ministries and leadership development. We are serving an increasing number of children in our Pella family and our community. An expansion of our children's ministries is needed to serve their needs and the needs of their families. We have been blessed with strong leadership, but in order to continue growing these ministry opportunities, it is essential to identify and nurture additional leaders.

Jesus says, "The harvest is plentiful, but the workers are few. Ask the Lord of the harvest, therefore, to send out workers into his harvest fields".
Luke 10:2



AREAS OF MINISTRY

Worship Ministry Team

Leading people who gather together in communal relationship in God's presence

- Providing space for people to connect with each other and with God
- Creative planning for regular worship services and special worship



Spiritual Growth Ministry Team

A ministry helping people grow in their relationship with God

- Providing spiritual growth opportunities for adults, youth and children
- Offering training which equips people to build intentional relationships
- Planning opportunities for people to discover and use their spiritual gifts
- Assisting people to discover their personal calling



Care and Compassion Ministry Team

Enhancing relationships by meeting the needs of individuals who are connected to the church

- Cooking meals or sending out cards
- Raising funds and other types of support
- Bringing awareness of other people's needs before the church



Community Engagement Ministry Team

Creating opportunities to connect with people outside the church and in our communities

- Open a space to invite church members to enter relationships with their neighbors, friends and co-workers
- Making efforts to be Christ's presence in our community



MINISTRY ORGANIZATION



Consistory

Elders and Deacons elected by the congregation

- Provide spiritual and fiscal oversight
- Discern God's direction and safeguard the vision
- Hold ultimate responsibility and authority over all ministries
- Delegate responsibility and authority to the pastor for development and implementation of Pella's ministry programming
- Call, support and provide loving accountability for the pastor
- Personally live out the vision of the church

Pastor

Called to lead Pella into the next chapter of our ministry

- Accountable to the Consistory
- Provides visionary leadership
- Responsible for developing, leading and supporting the Ministry Team Leaders
- Creates a collaborative ministry to live into the direction/vision of the church
- Delegates responsibility and authority to ministry leaders
- Preaches and provides pastoral care
- Personally lives out the vision of the church

Ministry Team Leaders

Members of Pella who have shown spiritual maturity, giftedness, experience, passion, and/or a sense of calling to lead a particular area of ministry.

- Are accountable to the pastor
- Responsible for the creative development and implementation of their ministry
- Personally live out the vision of the church



MINISTRY ORGANIZATION

Ministry Teams

Plan, coordinate and implement ministry in alignment with Our Direction

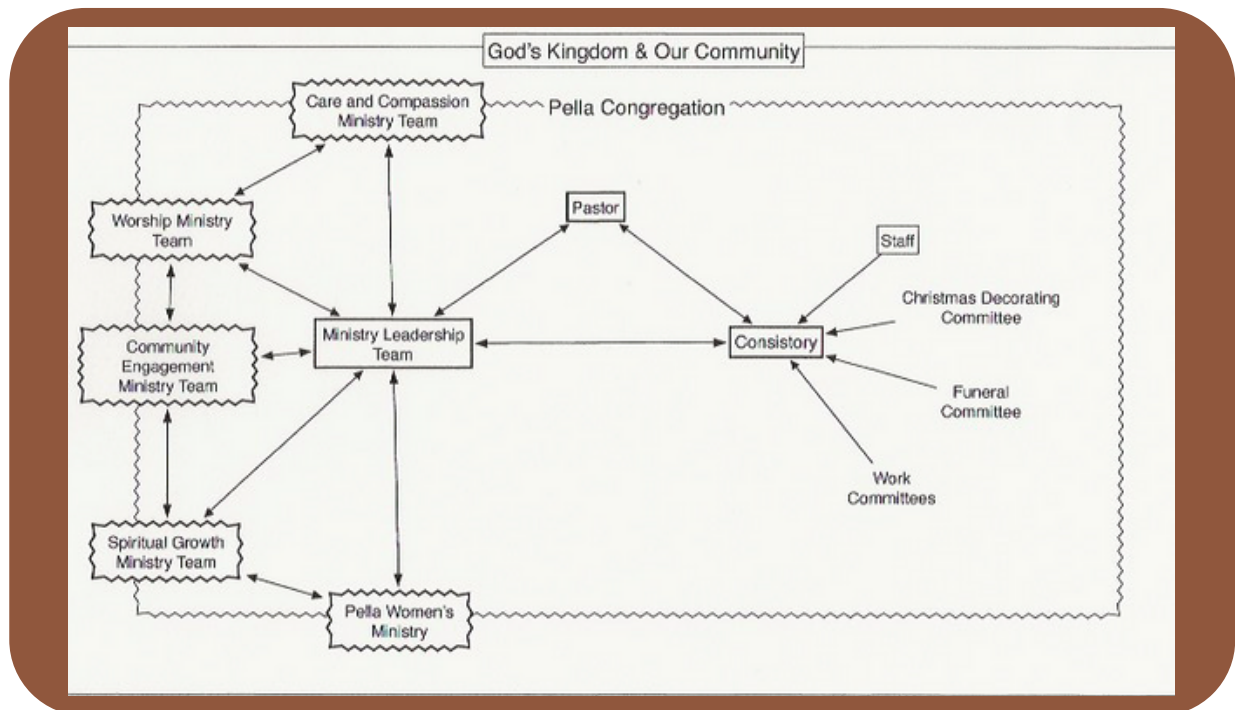
- Are accountable to the pastor
- Meet on a regular basis
- Cast vision and offer mutual support
- Are continually learning
- Communicate, coordinate and plan jointly with all ministry teams
- Personally live out the vision of the church

Support Staff

Assist the pastor with Worship preparation

- Create bulletin, ProPresenter, emails, phone calls, assisting congregation, calendar, prayer families, website updates, online directory, assist pastor

STRATEGIC STRUCTURE



LEAD PASTOR DESCRIPTION

Responsibilities

Preaching and Worship

Preach Biblically based messages for the purpose of transforming lives through the revelation of Jesus Christ. Together with the Worship Ministry Team, create engaging worship experiences which connect us to God.

Spiritual Walk

Model an active, growing relationship with Jesus Christ, devoted to loving Him and serving Him.

Relational Ministry

Be present in our community, reaching out and building relationships to impact the Kingdom.

Vision and Alignment

Provide visionary leadership, aligning the ministries of Pella and the people of Pella with the direction detailed in our Ministry Plan.

Leading and Equipping

Be a leader of leaders, providing intentional leadership development for all of the people of Pella and equipping them to serve in a gift-based, passion-driven ministry.

Pastoral Care

Respond to and care for personal needs within our congregation and our community as they arise, especially in times of emergency.

All scripture is inspired
by God and is useful for
teaching, for reproof, for
correction, and for
training in
righteousness, so that
everyone who belongs
to God may be
proficient and equipped
for every good work.
2 Timothy 3:16-17



LEAD PASTOR DESCRIPTION

Requirements

- Preferably Ordained Pastor (RCA, CRCNA, PC(USA), UCC, ELCA) with Master of Divinity, open to commissioned or non-ordained
- Preach a minimum of 47 Sunday morning worship services (exceptions as approved by consistory)
- Adheres to Reformed Theology and RCA Polity
- Demonstrate the qualities of 1 Timothy 3:1-7, Titus 1:6-9, 1 Peter 5:1-5 with integrity, humility, responsibility, teachability and servanthood as a gracious and loving Pastor

Compensation

The pastor's salary will be based on the Classis of Central Plains salary schedule. Compensation will include housing in the church parsonage, family health insurance, retirement annuity, life insurance, vacation and study leave.

The parsonage is located next to the church. It is a ranch home with 3 bedrooms and a bathroom on the main floor. The finished basement includes one bedroom, a large family room area and a half bath. A large, two stall garage is attached. The spacious yard includes a garden and play area adjacent to a lighted ball field that is used by the church and area ball teams.

Application Instructions

We will review all applications after receiving the following documents and information:

- Cover Letter of Introduction
- Resume
- Digital copies or links to sermon videos
- References (references will only be contacted after speaking with the applicant)

You may fill out an online application at pellachurch.org/pastor-search, email your information to tim_nieveen@hotmail.com OR mail the information to:

Pella Church
Attn: Search Team
16101 Pella Road
Adams NE 68301

If you have questions, contact the Pella Search Team Chairman, Timothy Nieveen at tim_nieveen@hotmail.com or 402.988.8180.

ALL information provided by applicants will be confidential.

APPENDICES

- A. Community Information
- B. Local School District
- C. Church Updates
- D. Data



A.

Community Information

The phrase, “The thing about small towns is once you’ve seen the cannon in the park, you’ve seen it all” is only half true when we speak about Adams, Nebraska. Yes, it is true there is a cannon in the local cemetery and on Memorial Day it’s packed with gunpowder and fired above the crowd to honor American heroes, but as enjoyable as that is it does not mean you’ve seen it all. Adams, Nebraska has a population of 604 people and carries the charm of a small town as well as the amenities of a larger Nebraska city. When it comes to your day-to-day business, you can stop at the bank to cash a check, make a quick errand into the grocery store or post office, and workout in the recently built fitness center. For those few times a year tasks where you want someone who you can trust, Adams locals will vouch for the repair shop, the hardware store, the tax accountant, primary care and pharmacy, the chiropractor or masseuse, hair salon and even the dentist. After the busy days are done you can delight yourself with a cup of coffee and lunch at the café, or pizza and soda from the bar, a fresh baked cinnamon roll bear at the sweet’s shoppe, or maybe even some new clothes from the boutique or shirt print shop to help show your new found Freeman Falcons pride. Falcon pride runs deep at Freeman, the school located in Adams that serves K-12th grade and has a couple teachers that are Pella members. There are a few playgrounds at the school that are open to the public as well as the track and library. For the younger kids, Adams has a daycare center that is attached to the retirement community. Now that the basics are taken care of, where’s the fun! The Adams Community Foundation began their new park project summer of 2022 at Adams Village Park, where a new concession stand and restrooms were built. This plan also includes; a splash pad, dog park, new softball, baseball and practice fields, new basketball, tennis and volleyball courts, batting cages, camper hook up sites, and horseshoes. The park also currently has two playgrounds for kids, two shelters available for use and various picnic tables. The community foundation also hosts events all year long including Adams Days, Fourth of July celebration, trivia night, the Santa Clause event and more. There are sporting events that run all year long through the school, the Legion or Fantastic Gymnastics. It won’t take long to feel at home in the Adams community and when you do, an Adams local photographer can capture every special moment. Consider visiting <https://www.villageofadamsnebraska.com/> to see more about Adams, NE.



B.

Local School Districts

Freeman Public Schools is located in Adams. It is a Class C2 school with an enrollment of 450 students in preschool to twelfth grade. Freeman is an open enrollment school which allows students in the Pella area to option into the school system.

Norris Public Schools is located between several small communities, 7 miles from Pella. It is a Class B school with an enrollment of 2,200 students in preschool to twelfth grade. Pella is located in the Norris district.

Both schools are highly rated in the Nebraska public school system.

C.

Church Updates

Pella has a newly renovated kitchen, recently replaced the carpet and purchased a new pulpit, communion table and baptismal. Pella has also made great strides in technology; a new 48 digital sound mixer, a new camera for live streaming capabilities, a streaming and multimedia computer with ProPresenter, and personal wireless in-ear monitors for praise team.



D.

Demographics

Pella by the Numbers The Demographics of our Community within a 10 mile Radius

2021 Total Population	11,202
2026 Forecasted Population	12,007 +7.2%
2021 Average Age	39.95
2026 Forecasted Average Age	41.06 +2.8%
2021 Average Household Income	\$106,806
2026 Forecasted Average Income	\$119,729 +12.1%
2021 Per Capita Income	\$38,777
2026 Per Capita Income Change	\$43,486 +12.1%
Residents with at least a High School Diploma	91.4%
Residents with a Bachelor's Degree or higher	32%
Blue Collar Workers	31.3%
White Collar Workers	68.7%

