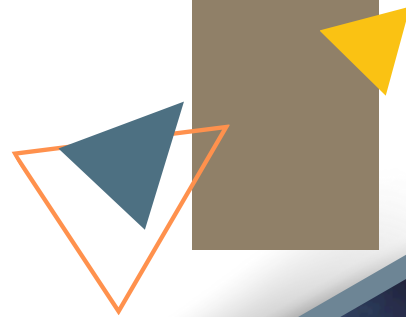


OPPORTUNITY PROFILE



LEAD PASTOR



Bethany
baptist church

BETHANYBAPTIST.BC.CA

22680 Westminster Hwy., Richmond, B.C. V6V 1B7

TABLE OF CONTENTS

Page 2	Executive Summary	Page 12-14	Meet The Team
Page 3-4	About Bethany	Page 15	Position Summary
Page 5-7	Who We Are	Page 16-19	Position Description
Page 8-11	Our Location	Page 20	How To Apply

EXECUTIVE SUMMARY

Bethany Baptist Church is seeking our next Lead Pastor who will serve as the main preacher and spiritual leader of the church. He will model a growing Christian life, provide direction, and equip the congregation through teaching the scriptures, training disciples, managing the staff, and overseeing the weekly programs and worship services. This will be done with the purpose of moving Bethany Baptist forward in achieving its mission and vision.

Bethany has been in its current facility for 26 years and is located in the East Richmond neighbourhood of Hamilton, with New Westminister's Queensborough neighbourhood just down the street. We are the only Protestant church in this developing area and continue to focus on growing as a multi-ethnic, multigenerational church in the beautiful and central place that God has led us to. We belong to the North American Baptist Conference (NABC) and BC Baptist Association. This relationship gives us the opportunity to build connections with our sister churches and support global outreach through the mission work of NABC. In addition, we collaborate with churches of other denominations in the Richmond area by occasionally combining services or participating in ministerial events.

The Lead Pastor is called by the church, and is accountable, first and foremost, to God and His Word, and secondly to the Board of Directors and membership of Bethany Baptist Church. The Lead Pastor will work collaboratively with the Board and the staff. The position is full-time, based on a 40-hour work week, and requires flexibility in hours available for work, including evenings and weekends.

If you are called to team-oriented pastoral ministry, have strong skills in preaching and teaching, a desire to help people know God personally and to assist the church in committing to helping individuals and families thrive in the spiritual, emotional, and relational areas of life, we would love to hear from you.

ABOUT BETHANY

Our History

Bethany Baptist Church was founded as a German speaking church in Vancouver on June 19, 1937. In the post-World War II years, Bethany Baptist was active in providing relief to the steady stream of European immigrants that were arriving in Canada. The church experienced rapid growth due to its support ministries for those seeking comfort, jobs and fellowship upon their arrival.

As time went on, during the 1950s and 60s, Bethany grew and transitioned into a congregation that reflected and incorporated the community around them. Being a family-oriented church and experiencing a growth in younger congregants, greater emphasis was placed on children's and youth ministries.



During the 1980s Bethany continued to encourage community outreach, laying the groundwork for our present day focus as a multiethnic church. Continued growth rendered our Vancouver facilities inadequate as many new families arrived. A site for relocation was found in the mostly undeveloped neighbourhood of Hamilton, in the City of Richmond, in the 1990s. After this 5.5-acre parcel of land was purchased, our current facility was lovingly built and dedicated in June 1998.

Over the years at our current location, we have watched the neighbourhoods of Hamilton (Richmond) and Queensborough (New Westminster) grow rapidly. As we remember our heritage as a church focused on families, new immigrants and missions work, we continue to focus on growing as a multi-ethnic, multigenerational church in the beautiful and central area that God has led us to. Today, Bethany includes ministries for children, youth, adults, women, seniors, and Chinese speakers. We gather for Sunday worship, Friday night activities for all ages, and weekday events including sports, Bible studies, ESL classes and house groups. Beyond our church building, we continue to support North American Baptist missionaries and work to build connections both with our NAB sister churches as well as other Richmond churches.

Together, we are committed to being a community-oriented church with a mission to make disciples of Jesus Christ.



WHO WE ARE



OUR PURPOSE is to glorify God by helping people know God personally and to share Jesus Christ's love with others. Within that purpose, we want to be known as a church that is committed to helping individuals and families thrive in the spiritual, emotional and relational areas of life.

OUR PASSION

We exist so people come to know Jesus and are equipped to become love-filled, faith-demonstrating followers of Jesus.



OUR HOPE

To see Bethany be a thriving and growing community of believers who take faith seriously as we engage and serve the Hamilton/Queensborough and surrounding communities. In this, we desire to be a church that embraces and represents all – described in Rev 7:9 as people from 'every nation, tribe, people, and language'. As believers, we are called to be people who speak out and live out justice and hope to a broken and needy world.



OUR VALUES

Authenticity

We acknowledge that we are an 'in process', Grace given people who sometimes fail and who sometimes disappoint. But, our focus is to follow and obey Jesus, and as we do, model His love to all we meet.

Faithfulness

We believe in the truth of God's Word and seek to live in accordance with that. That truth calls us as Grace given people to be grace giving people who 'prefer one another in love and good deeds'.

Creativity and Joy

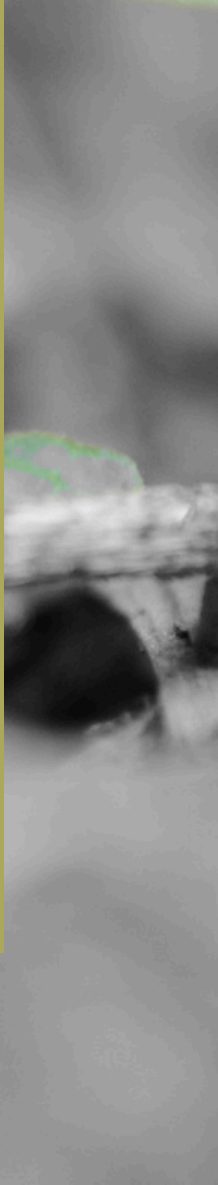
We believe creativity and joy are reflections of our Creator, inspiring us to be innovative and relevant with the message of Christ in our world.

Teachable Spirits

We desire to be a people who are always growing in our walk of faith so the reality of Jesus is more evident in what is seen than what is said.

Connecting Hearts

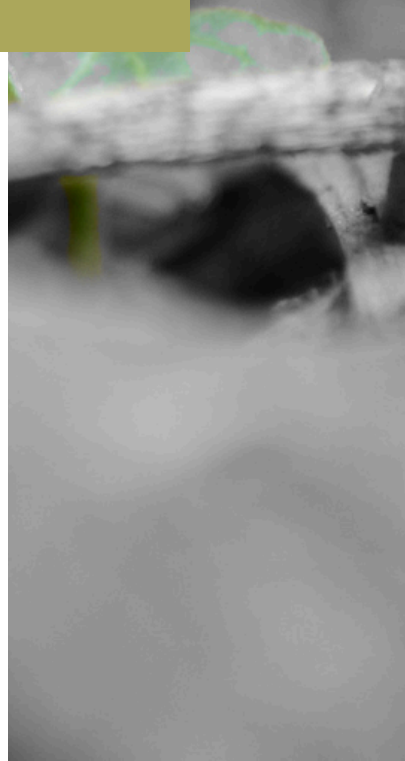
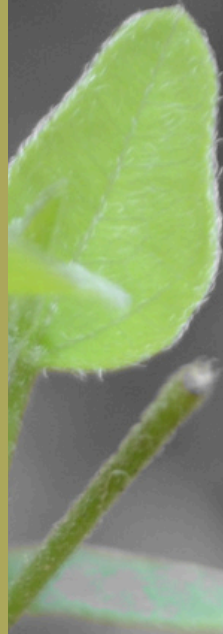
Our goal is to be people who are first relationally connected and accountable to our living Lord – then attractively and compellingly connected with others, as we invest our lives in our families, our friends, our neighbours and those with whom we study, work and play.



OUR SUCCESS

That as Christ followers we are people alive in faith:

- **Living Out** what we believe
- **Reaching Out** so others are invited to believe
- **Loving Out** so others are attracted by seeing what we believe
- **Giving Out** so others are impacted by what we believe:
 - in how we serve
 - in how we give, so current and new ministries and needs to which God leads us are well supported



OUR LOCATION

Our City

We are located in Richmond, B.C.: a diverse and growing city situated where the Fraser River meets the Pacific Ocean. Richmond has a population of more than 230,000 people and is centrally located between Vancouver and Delta. It is a unique island city that experienced enormous change and growth in the 1990s. Much of the recent population growth has been made up of Asian immigrants, with people of Chinese or South Asian ancestry representing more than 60% of residents. With many schools, parks, walkways and coastline, the beautiful scenery of our city contributes to Richmond holding the title of the city with the longest life expectancy in Canada!



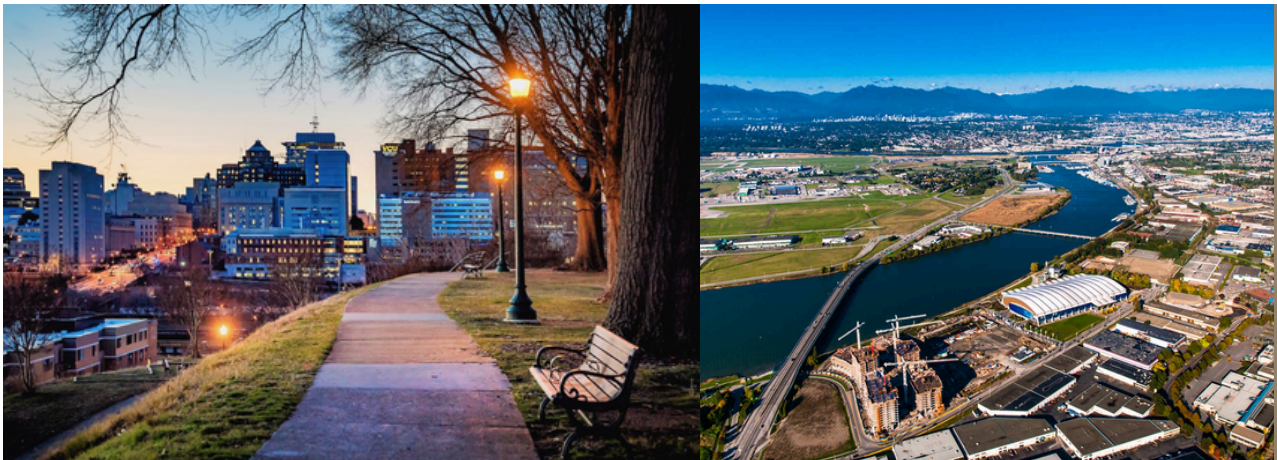
Richmond is a mix of residential areas, nature parks, farmland and many industries, especially high tech which has grown in recent years. We are connected to neighbouring Metro Vancouver cities by a series of bridges and a tunnel, along with a rapid transit line. Richmond is also home to Vancouver International Airport.

We enjoy a temperate west coast climate. As Richmond is situated at sea level, we experience less snow than neighbouring cities and temperatures are generally mild in both summer and winter.

Our Neighbourhood

Bethany sits in the heart of the Hamilton neighbourhood, with the Queensborough neighbourhood of New Westminster just down the street. These areas have experienced most of their growth in the years after we moved to the area, with many new townhouse complexes being built in the last few years alone. According to the Hamilton Community Plan, this neighbourhood is expected to grow to 12,000 residents by 2041. We are the only Protestant church in this area.

Bethany is a 5 minute walk from Hamilton Elementary School and Community Centre (Richmond), and a 5 minute drive from Queen Elizabeth Elementary, Queensborough Middle School, and Queensborough Community Centre (New Westminster). High school students from both neighbourhoods must drive or bus to their local high schools, McNair Secondary in Richmond, or New Westminster Secondary School.



We are directly across the street from McLean Park which has a playground, field and basketball court. There are many single-family homes in the surrounding area which predate most of the townhouse complexes nearby. We are also very close to the Queensborough Landing shopping area which features a Walmart, various restaurants and shops, post office, Value Village and casino complex.

We are connected to the rest of Richmond by Hwy 91, to North Delta by the Alex Fraser Bridge, and to mainland New Westminster by the Queensborough bridge.

Our Facilities

Our large, two-story brick building is used every day of the week. Along with the main auditorium that seats 800 people, the building also includes two multipurpose spaces which are great for gatherings, congregational meals, meetings, classes and rental events. In addition to these three large spaces, the main floor features our offices, boardroom, library, preschool and nursery classrooms, commercial kitchen and full-sized gymnasium. The upper floor holds classrooms for children, our youth room and youth classroom.



During the week, our preschool wing is home to the Bethany Childcare Centre and the children's wing is used for before and after school care. Weekday meetings include drop-in sports nights in the gym, ESL classes in various rooms, a parent and toddler drop in and seniors' groups who use the lounge, and more. On Friday evenings, children, youth and adults all meet for various groups and ministries in these spaces. On Sundays, we also rent our facilities to another church in the afternoons.

Outside, we have ample parking, a fully enclosed preschool playground, and a grassy area that borders a waterway and community walkway. The school and community centre area are connected to McLean Park through this pathway.



MEET THE TEAM



Rob Inrig
Transitional Lead Pastor

Serving as a Transitional Lead Pastor, Rob has been used of God in a number of churches assisting them to deal with the past and to heal as they get ready for what God wants to do in the next season of the church's life.



Christine Pfortmueller
Executive Director

Christine has attended Bethany for her entire life – all 50+ years! As a Chartered Professional Accountant (CPA, CA), Christine loves numbers, administration and organization; despite the fact that many other people think these things are boring.



Maureen Natusch
Office Administrator

Maureen is the Office Administrator at Bethany. She lives in Richmond, loves ramen, walks, long rides and serving her Saviour.



Joe Kung

Adult Ministries Pastor

Joe is the Pastor of Small Group Ministries, Seniors' Care, and Chinese Ministry. Joe is involved with the continuing development of the small groups at Bethany and is always interested in multi-cultural and community engagements.



Daniel Park

Associate Pastor

Daniel was born in Korea but at the age of four his family moved to Malaysia. When he turned ten, they moved to Sydney, Australia, which really became home. Daniel, his wife Joanne, and their three kids moved to Vancouver in early 2022.



Jordan Powell

Pastor of Youth & Young Adults

A graduate of Regent College, Jordan is convinced that theology shouldn't only be accessible to theologians, and wants to make thousands of years of Christian wisdom available and engaging to young people, while guiding them to encounter God in a real and living way.



Philip Wijaya

Worship Leader

Blessed with the opportunity to coordinate the music ministry at Bethany, Philips' heart is for people to experience Christ-centered and life-transforming worship that brings delight to God.



Angelika Hummelman

Children's Ministries Director

With a big heart for kids and young growing families, Angelika oversees and runs Moms & Tots on Tuesdays and Sunday School at Bethany.



Mitchell Pfortmueller

Student Ministries Assistant

Mitchell has attended Bethany all his life and has volunteered in many areas throughout those years: preschool, Bethany Kids/All Star Kids, sound team, deacons committee, and iConnect.



Jesse Bromley

Technical Director

Jesse grew up at Bethany. He has degrees from Pacific Life Bible College and from SFU related to working with youth and teaching. Jesse has worked as the Office Coordinator and Interim Youth Director at Bethany, but currently works as a teacher and is Bethany's Technical Director.

POSITION SUMMARY

Primary Duty

The Lead Pastor will serve as the main preacher and spiritual leader for the church. He will model a growing Christian life, provide direction, and equip the people through teaching the scriptures, training the people, managing the staff, and overseeing the weekly programs and worship services. This will be done with the purpose of moving Bethany Baptist forward in achieving its mission and vision.



KEY RESPONSIBILITIES

Public Ministry

- Provides the major preaching voice for the church during the year.
- Delivers Christ-centered preaching/teaching.
- Leads the planning and development of in-person and online worship services.
- Oversees the rites of the Christian church.
- Responsible for the overall efficient and harmonious operation of all church programs and committees effectively equipping both pastoral and lay leaders for the work ministry, with an emphasis on community outreach.
- Promotes and encourages unity and fellowship within the church body.

Ministry Administration/Leadership

Board of Directors

- Engages the Board of Directors as 'Ministers together' in the shepherding of the body.
- Provides spiritual leadership to the Board.
- Leads, guides, and collaborates with the Board of Directors to develop an overall church vision.

Staff

- Leads and manages staff in fulfilling their role responsibilities, building and maintaining an increasingly capable and cohesive staff team.
- Leads Executive Director and ministry staff in developing long-term and annual strategic goals.
- Develops relationships of genuine trust with staff.
- Engages the staff in ongoing dialogue regarding the goals and objectives of their ministries.

Broader Church Relationships

- Cultivates community relationship and involvements.
- Represents the church publicly where pastoral representation is desirable and approved by the Board.
- Cultivates positive relationships with other churches and Christian organizations in the local community.

All the above should be pursued as time and opportunity permit.

CORE CHARACTERISTICS

Responsibility to God

- Love God with heart, soul, strength and mind.
- Joyfully responds to God's call to ministry and servant leadership.

Responsibility to Self & Family

- Displays integrity, high morals and ethics.
- Maintains personal health through recreation and relaxation.
- Grows in ministry effectiveness through reading, ongoing education and professional development.

Responsibility to Bethany Baptist

- Fulfills character qualifications as highlighted in 1 Timothy and Titus.
- A committed Christian and must become a member of Bethany Baptist Church.
- Agrees with the Statement of Beliefs of Bethany Baptist Church and will sign agreement upon acceptance of position. [Click here](#) to view Bethany's Statement of Beliefs.

QUALIFICATIONS

Skill Set

- Collaborative leader and team builder.
- Approachable and able to connect with all cultures and age groups.
- Strong interpersonal skills.
- Effective communicator.
- Able to adapt to changing circumstances or priorities.

Education and Experience

- A degree in theology/pastoral ministry or equivalent from an accredited institution.
- Experience as a Lead Pastor (5+ years) in a multi-staff environment, with a proven track record in spiritual and ministry leadership in a multicultural setting.




HOW TO APPLY

A copy of the full detailed job description can be found [here](#).

Please forward a PDF of your cover letter, CV, and statement of your call to pastoral ministry to search@bethanybaptist.bc.ca.

Include “Bethany Baptist Church - Lead Pastor” in the subject line.

Phone :

 604-519-0123

Web Site :

 www.bethanybaptist.bc.ca

Address :

 22680 Westminster Hwy., Richmond, B.C. V6V 1B7

