

The logo consists of the letters 'FBC' in a white, stylized, cursive font, set against a dark gray square background.

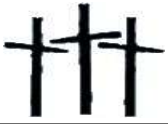
FIRST BAPTIST CHURCH *of*  
**LEAVENWORTH**

*Faith in God • Growing in Faith • Serving Others*

**Building and training a body of believers who intentionally reach out to the world and community with the gospel of JESUS CHRIST.**

FBC *of* LEAVENWORTH  
340 N. 13th St.  
Leavenworth, KS

<https://www.facebook.com/fbcleav>



## Who We Are

### Our Mission

To build and train a body of believers who intentionally reach out to the world and community with the gospel of Jesus Christ.

To affect our local community by: Presenting the Gospel to all people encouraging all believers to maturity and service to others.

Ministering to the whole person, their spiritual, physical, emotional, and social needs, and strengthening the family structure with love and unity.



### Our Vision

**Faith in God** – Through engaging worship and Biblical messages, bring people into a relationship with God and other Christians. Emphasis on inviting guests.

**Growing in Faith** – Connection groups on Sunday mornings and other times. Grow spiritually, pray for one another, and fellowship with one another. Emphasis on inviting guests.

**Serving others** – Sharing the love of Christ with the community and the world with emphasis on inviting guests.

<p style="text-align: center;"><b>FBC Vision</b></p> <ul style="list-style-type: none"> <li>● <b>Faith in God</b></li> <li>● <b>Growing in Faith</b></li> <li>● <b>Serving Others</b></li> </ul>
--

## What We Believe<sup>1</sup>

We believe that God is the creator of the universe and all that is, both visible and invisible. God created mankind in His own image with the capacity for communion with God. (Genesis 1, John 1:1-3, Colossians 1:16)

We believe in one God who exists in three distinct persons - Father, Son, and Holy Spirit. We believe Jesus Christ is the only begotten Son of God. Jesus is and always was God. (John 1:1-14 and 1:33-34, Luke 3:22, Matthew 3:16-17)

<sup>1</sup> Our church follows the Declaration of Faith in the 1833 New Hampshire Confession



We believe the Bible, consisting of the Old and New Testament, is the inerrant Word of God written through the inspiration of the Holy Spirit. We accept the Bible as the source and basis of our beliefs and practices. (II Timothy 3:16-17, II Peter 1:20-21)

We believe we are all sinners and that Jesus is the one and only way to salvation and reconciliation with the Father. God the Father offers redemption and restoration to all who confess and forsake their sin, seeking His mercy and forgiveness through Jesus Christ. (John 14:6, Acts 4:12, Romans 3:23 and 6:23)

We believe Heaven and Hell are real eternal places. Those who accept Jesus Christ as their Savior will exist forever with Him in Heaven (paradise). Those who reject Christ will be forever separated from God in a place called Hell. (Matthew 5:20, 25:31-46, Luke 16:19-31, Revelation 20:10-15)

We believe the local church consists of a body of believers with Christ as the head. The church is organized for worship, fellowship, discipleship, evangelism, and service. (I Corinthians 12:12-14)

## Our Community



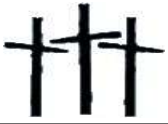
The City of Leavenworth, Kansas is located on the west bank of the Missouri River. Leavenworth is 28 miles northwest of Kansas City, Missouri.

Leavenworth has a small town, historic atmosphere with access to the amenities of a larger city. Leavenworth was the first city incorporated in the Kansas Territory, hence its motto: "First City of Kansas." Fort Leavenworth, built in 1827, was separate from the City of Leavenworth until annexation in 1977.

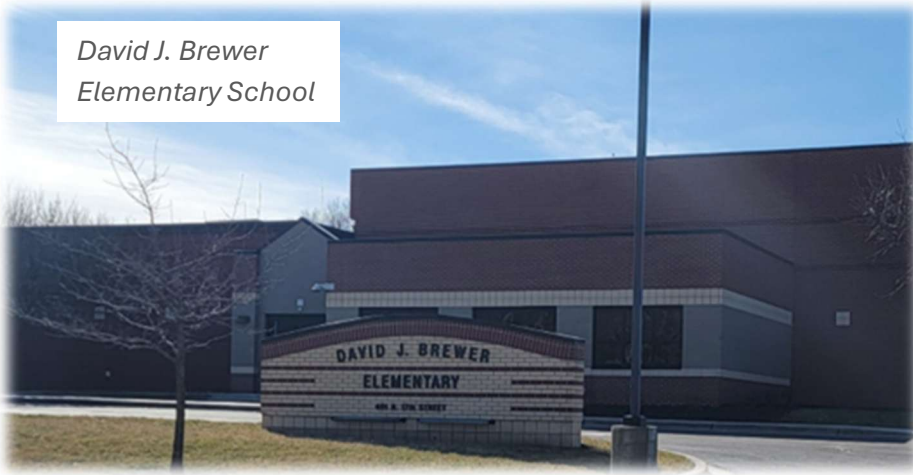
Leavenworth is a prime middle class community with a sound business base in the Kansas City Metropolitan area. The Leavenworth area, which includes Fort Leavenworth and Lansing, has a population of over 50,000.

There are three public school districts in the Leavenworth area along with two private K-8 schools. The nearest public schools to the church and parsonage are David J. Brewer Elementary School, Richard W. Warren Middle School, and Leavenworth High School. Additionally, Kansas offers an open enrollment policy, enabling parents and students to choose which district they want to attend. The University of Saint Mary and Kansas City Kansas Community College provide post-secondary opportunities in Leavenworth in addition to many options in the Kansas City area.





*David J. Brewer  
Elementary School*

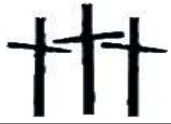


*Richard W. Warren Middle School*



*Leavenworth High School*





Area medical facilities provide a full range of services and the Dwight D. Eisenhower Veteran’s Affairs (VA) Medical Center provides for the needs of veterans. Emergency room services are available at St. John Hospital and St. Luke’s Community Hospital – Legends. There are several urgent care facilities in the area and numerous hospital facilities in nearby Kansas City.



The Leavenworth Parks and Recreation Department maintains a system of more than twenty-five parks, an aquatic center, and the Riverfront Community Center. The church and parsonage are across the street from Wollman Park, which contains the aquatic center, and the Riverfront Community Center offers an indoor cardio facility, an indoor pool, a gymnasium, and an excellent event venue. Additionally, there are other fitness facilities in the Leavenworth area.



Leavenworth has a historic shopping district that includes artisan shops, antique shops, art galleries, bakeries, bookstores, pottery shops, restaurants, a farmers’ market, and many other points of interest. There is a variety of international cuisine offered in local restaurants. In



addition to the many cultural and recreational opportunities in Leavenworth, its proximity to the Kansas City metropolitan area enhances Leavenworth's quality of life. In Kansas City, there are many professional sports venues, such as baseball, football, soccer, and the National Association for Stock Car Racing (NASCAR). Kansas City also boasts several museums, art galleries, performing arts venues, restaurants, shopping, a zoo, and an outdoor theater (Starlight).



Riverfront  
Community  
Center



Downtown Leavenworth



Farmers' Market

*! Useful Links:*

City of Leavenworth <https://www.leavenworthks.org/> ; City of Lansing <https://www.lansingks.org/>

Leavenworth Chamber <https://www.leavenworthchamber.org/>

Leavenworth Public Schools <https://www.usd453.org/> ; Lansing Public Schools <https://www.usd469.net/>

Leavenworth Catholic schools <https://leavenworthcatholicschools.org/>

Lutheran schools <https://splschoo.org/>



## Our Church

Our church is located on 11 acres at 340 North 13<sup>th</sup> Street, across from Wollman Park in Leavenworth, Kansas. The parsonage, on the same tract of land, is located at 1212 Seneca and is currently undergoing major renovation.

Our church has a long history of seeking to advance the Kingdom of God through preaching the Gospel, administering the ordinances of baptism and communion, teaching of Scripture, encouraging Christian fellowship and ministering to the local community of Leavenworth, Kansas. Additionally, we support local, national, and international missionary endeavors.

Our church is a body of Godly-minded people continuing to seek God’s will and direction. Our church is dedicated to the Glory of God and continuation of His Kingdom here on Earth.

We also recognize with gratitude the rich heritage our church has in the Baptist work in Kansas. We continue our affiliation with the American Baptist Churches of the Central Region, Northeast Area, and the American Baptist Churches of the USA.

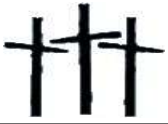
- 1860**
  - First Baptist Church was organized in Leavenworth, held in various buildings.
- 1865**
  - Cornerstone laid to new church building.
- 1871**
  - Church building completed at 6<sup>th</sup> & Seneca Streets in Leavenworth.
- 1950**
  - Church members bought land on 13<sup>th</sup> & Osage Streets for future expansion and growth.
- 1959**
  - Current church building was erected.
- 1960s**
  - Parsonage built on church property.
- 2007**
  - Completed major addition to the church, to include larger nursery, gym, new fellowship hall, etc.



*FBC (Northwest side)*



*Parsonage*



## Church Activities

### Worship Service

Currently, the church has one morning worship service which begins at 10:30 on Sunday, typically averaging 115 people at the service. The music is a blend of traditional (with organ, piano and choir) and contemporary songs. In the past, when church attendance was greater, we held two worship services – one with contemporary music and one with traditional. As our church grows, we would like to return to two services. Additionally, our church has a Sunday evening service at 6:00.



### Children's Church

Children's church is provided during worship service for children aged K-5<sup>th</sup> grade.

### Sunday School and Adult Bible Study

Sunday School meets before worship service every Sunday morning at 9:15 for children aged K-2<sup>nd</sup> grade, 3<sup>rd</sup> - 6<sup>th</sup> grade, and 7<sup>th</sup> grade - high school. Our nursery takes care of children from birth to 4 years old. Adults meet at the same time in various classes (Messenger, Berean, Hope, and Agape) to study the Bible.







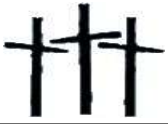
## Wednesday Evening Activities

Several ladies from the church cook and serve a meal for any in our church, charging a nominal fee for those who can pay. Following mealtime, the pastor leads a Bible Study and prayer service, while the children attend Kids Club (for ages K-5<sup>th</sup> grade). Oftentimes, in lieu of or in addition to the Bible Study for adults, there will be other classes such as grief support class, financial management class (using Dave Ramsey material), etc. Choir practice follows these activities.



## Connection Groups

Our church is in the process of establishing connection groups, small groups of believers who can get together on a routine basis to fellowship and grow spiritually through a focused Biblical study. The connection groups should spend time in prayer and provide emotional support to each other. Developing caring, spiritual friends is the heart of connection groups. The groups will be the front line of care for church members by meeting the immediate needs of their own group members. The intent is that the groups could meet at the church or at people's homes during the week. Over time, the groups will invite others to attend and as the group grows, it will split into two or more groups and continue the process. The connection groups will help fulfill our vision for the church.



## Vacation Bible School (VBS)

The church hosts VBS each year in the summer for children K-5<sup>th</sup> grade. The VBS director and workers are dedicated volunteers from the church. VBS has been a great evangelism experience over the years, resulting in salvations and other commitments to the Lord.





## Other Church Activities

Other church activities include children attending camp (usually at God's Mountain in Rushville, Missouri), the Food Pantry (from which we provide a bag a food to anyone in the community), American Baptist Women's (ABW) group, and White Cross ladies (who make handmade and sewn items for people locally in the nursing homes and for mission endeavors nationally and internationally). Additionally, our deaconess team provides food baskets to the shut-ins and the less fortunate in our church. At Thanksgiving, our church hosts a Harvest Home dinner for church members, their families, and visitors.

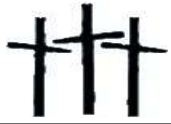


## What Do We Want The Pastor To Do

We want the pastor to effectively prepare and present Biblically based sermons that are instructional, encouraging, and lead people to Christ.

### Job Description

1. The pastor shall perform the duties of overseeing the ministry of the church (I Timothy 3:1-2).
2. The pastor shall be the administrator of the church staff and an ex-officio member of all ministry teams, committees, and organizations of the church with full voting privileges.
3. The pastor shall annually evaluate the pastoral and support staff and report those evaluations to the appropriate ministry team or committee, to include salary recommendations.
4. The pastor shall be responsible for the overall planning of the worship services of the church.

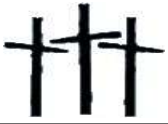


5. The church shall meet for one or more services on the Lord’s Day (Sunday), for the worship of God and the proclamation of the Gospel of our Lord and Savior.
6. The pastor will preach a sermon based on Biblical-based principles at each worship service. Exception: on occasion, other worship events (ABW Sunday, cantata, Missionary Sunday, etc.) will take the place of the pastor’s sermon.
7. The pastor will lead a Bible study at Wednesday evening services which will include a prayer time. Exception: on occasion, the pastor may plan and provide other subjects (approved by the deacons), in lieu of Bible study.
8. The ordinance of the Lord’s Supper shall be observed on the first Sunday of each month. The pastor and the deacon ministry team may change the above schedule for reasons they determine pertinent.
9. The pastor shall arrange for pulpit supply during an absence, with the assistance of the deacons (i.e., deacon ministry team) as needed.
10. The pastor shall, in conjunction with the deacons, appoint such committee or task forces, not herein provided for, as may be needed from time to time to further the ministries of the church. This task may be delegated by the pastor to a representative.
11. The pastor shall have the prerogative of calling a meeting of any committee or ministry team when he deems it necessary, after first contacting the chairperson of that committee or ministry team if possible.

## Church Survey Results

The church congregation responded to a questionnaire regarding expectations of a new pastor. Below are the results and implications of two key questions posed.

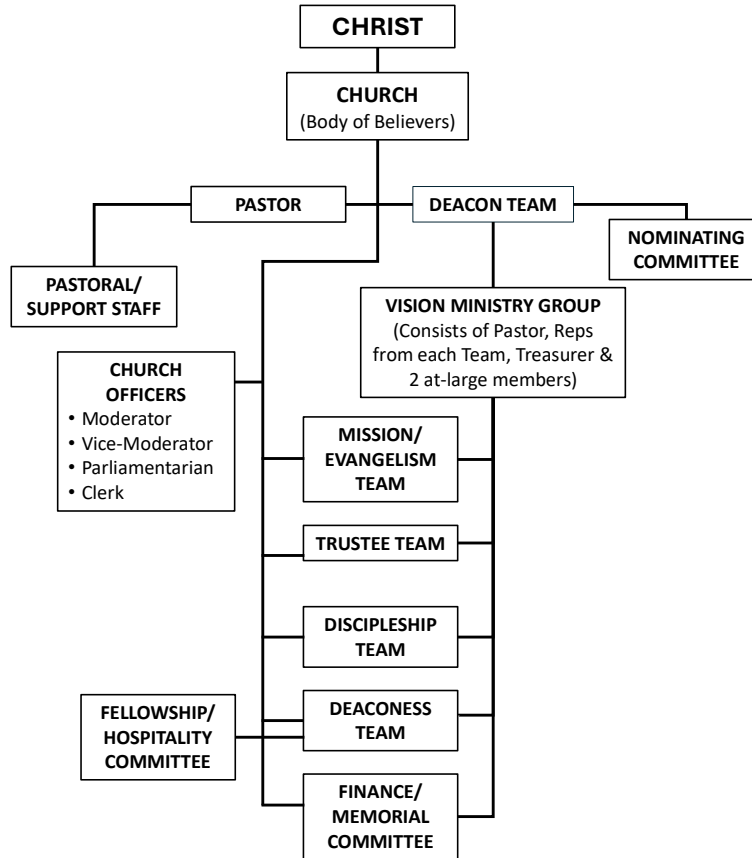
Excerpt of Church Survey Results		
Question	Result	Implication for New Pastor
<b>Skills Most Important for Pastor</b>	<b>Priority</b>	<b>Preaching is highest priority, followed closely by Leadership &amp; Bible Teaching.</b>
Leadership	2	
Preaching	1	
Mediation		(significantly lower priority)
Shepherding		(significantly lower priority)
Pastoral Care		(significantly lower priority)
Bible Teaching	2	
<b>Biblical Areas to be Preached</b>	<b>% Yes</b>	<b>Pastor needs to preach the <u>WHOLE</u> Bible, not be fearful.</b>
Old and New Testament	97%	
Controversial Subjects	57%	
Tithing	65%	
Heaven and Hell	84%	
End Times	82%	



## Compensation

The compensation package for negotiation includes pastor’s salary, Ministers and Missionaries Benefit Board (MMBB) retirement, housing allowance equivalent (parsonage) and utilities, and paid vacation and sick leave.

## Church Structure



## Search Committee

